

Organizers



Partner



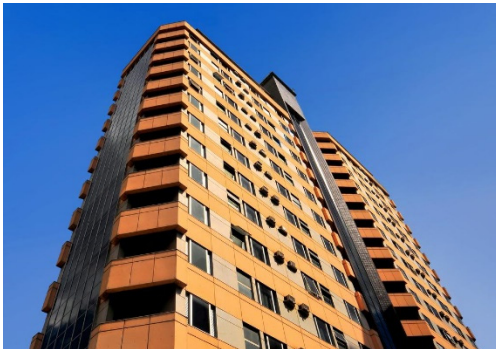
WORKSHOP

# Sustainable Water Management in Mining and Post-Mining Landscapes

OCTOBER 1-5, 2018 • BELO HORIZONTE

## LOGISTICS

### 1. HOTEL



#### MAX SAVASSI

Address: Rua Antônio de Albuquerque, 335  
Savassi, Belo Horizonte

Phone: +55 (31) 2101-6466

<http://www.maxsavassi.com.br/en/>

Check-in: 14:00

Check-out: 12:00

Participants will be staying at the Max Savassi Hotel. The rooms are air-conditioned and Wi-Fi is available throughout the hotel free of charge. The organization will be covering your stay at the hotel during the period of the meeting (from September 30 to October 06).

Savassi is one of the most famous neighborhoods in Belo Horizonte. It is located at the Central-South area of the city and is very well known for its large number of bars, pubs, clubs, cafés, bistros, diners, restaurants, nightlife and a highly busy and developed shopping commerce, regarded as one of the most prestigious and sought-after areas in Belo Horizonte. It used to be a region inside the traditional and wealthy Funcionários neighborhood, but in 2006, it was dismembered by the Town House before the meeting of the Inter-American Development Bank, which was to happen that same year in the city. Savassi takes its name from an Italian family, which owned a bakery in the central square, the Praça da Savassi, that time, Praça Diogo de Vasconcelos (Diogo de Vasconcelos Square), around the mid-1930s, and the bakery was named after the family's last name. Then, the square got known as Savassi, and later the entire region was known as well.

Phone calls, alcoholic beverages, mini bar, laundry and other similar expenses are of the responsibility of each guest. Guests staying for additional nights and/or with an accompanying person are responsible for the expenses referent to extra period and/or guest. These extras can be paid directly at the hotel in either cash or credit card.

Notes:

- If you are staying at the hotel for extra night(s) and still have not informed this to the organization of the meeting, please do so ASAP so the reservations can be booked accordingly.
- If you are coming with an accompanying person and still have not informed this to the organization of the meeting, please do so ASAP.
- Your name will be at the front desk of the hotel. You don't need a reservation number.
- Vitor Vieira will be at the hotel during the period of the meeting, you can contact him if you need assistance.

## 2. ARRIVAL/DEPARTURE

Most participants will arrive in the Tancredo Neves/Confins International Airport.

- **For German and Canadian Participants:** as you exit customs, Vitor Vieira will be waiting for you with a sign with the logo of the meeting (please see the header of this file). If you don't find Vitor, please call him on +55 21 98460-8892. A bus will take you from the airport to the hotel. The bus will depart as soon as we have all members of the German/Canadian delegation together.
- **For Brazilian and Latin American Participants:** please take an Uber or a taxi from the airport to the hotel. Kindly keep the receipt so that the organization can reimburse you for this expense.

For your departure, to ensure that your transfer to the airport is organized correctly, kindly confirm your flight schedule with Vitor Vieira during the period of the meeting.

## 3. VENUES OF THE “SUSTAINABLE WATER MANAGEMENT IN MINING AND POST-MINING LANDSCAPES” WORKSHOP

The meeting will be held at different locations:

- **October 1:** Renova Foundation, Mariana (MG) - please find below more information on the fieldtrip.
- **October 2-4:** School of Engineering, Federal University of Minas Gerais-UFMG (Address: Av. Pres. Antônio Carlos, 6627 - Pampulha, Belo Horizonte - MG, 31270-901).
- **October 5:** Inhotim Institute, Brumadinho (MG) - please find below more information on the visit.

## 4. VENUE OF THE OFFICIAL DINNER - OCTOBER 3

The Official Dinner will take place at Farroupilha Grill Steakhouse - Pampulha (Address: Av. Antônio Abrahão Caran, 960 - São José, Belo Horizonte - MG, 31275-000).

## 5. FIELD TRIP IN MARIANA (MG)

The Fundão dam collapse, in the municipality of Mariana, Minas Gerais, in November 2015, is registered as one of the biggest environmental tragedies caused by a mining company in the world. The task of

repairing and compensating for the human, material and environmental damages and effects caused by the event now belongs to the Renova Foundation, created to put into practice the measures and programmes agreed upon a legal commitment.

The volume of tailings, the path they traveled and the different ways in which they spread became a complex challenge in terms of scale, time and knowledge. Lack of drinking water, loss of houses, businesses, animals and plantations, as well as the suspension of fishing, are among the main direct damages along the 670 kilometers of riverbanks over the mud flowed to reach the sea.

All in all, 39 municipalities were impacted. Three locations, more severely: two districts belonging to Mariana – Bento Rodrigues and Paracatu de Baixo –, and a part of Gesteira, a district of the municipality of Barra Longa, which was also hit in its urban area. They are the main destinations of this journey to get to know the technology, operations and first results of the mitigation efforts that the Renova Foundation is heading in the region. Some initiatives that will be visited are still pilot projects; others will be encountered in early phases of implementation. Apart from managing the spread tailings and compensating the losses caused by the Fundão dam collapse, all programs and projects have the common purpose of contributing to a perennial legacy of environmental sustainability, economic diversification and social opportunities for the entire impacted region.

- **Clothes:** solid shoes (preferably leather shoes/boots) and weather-proof clothing are basic essentials for the excursion. Long-sleeve shirts are not demanding. The use of hats/caps is recommended, as well as sunscreen.
- To avoid mosquito bites, it is advisable to protect yourself by using insect repellent.

## 6. VISIT TO THE INHOTIM INSTITUTE

Inhotim Institute began to be conceived in the mid-1980s by Minas Gerais businessman Bernardo de Mello Paz. With time, this parcel of private land was transformed into a unique place, with one of the most significant collections of contemporary art in the world and a botanical collection containing rare species from every continent. The collections are used as tools for the development of educational and social activities involving various age groups. Inhotim, a Public Interest Civil Society Organization (OSCIP), has also constructed various areas for interaction with the surrounding communities. Through its multidisciplinary activities, Inhotim has continuously consolidated its role as a driving force for sustainable human development. For further information please access: <http://inhotim.org.br/en/>.

- **Clothes:** casual (preferably jeans and comfortable closed shoes). The use of hats/caps is recommended, as well as sunscreen.

## 7. MEALS

During your stay in Belo Horizonte, lunch will be served at the venues of the meeting. Dinner will be served at the hotel or at Farroupilha Grill Steakhouse - Pampulha. At the hotel, starting at 19:00, dinner will be available in the same restaurant where breakfast is served. The dinner will be buffet style and non-alcoholic beverages are included. Alcoholic beverages shall be covered individually.

	SEPTEMBER 30	OCTOBER 1	OCTOBER 2	OCTOBER 3
BREAKFAST	X	Hotel	Hotel	Hotel
LUNCH	X	Venue of the Meeting	Venue of the Meeting	Venue of the Meeting
DINNER	Hotel	Hotel	Hotel	Farroupilha Grill Steakhouse - Pampulha

	OCTOBER 4	OCTOBER 5	OCTOBER 6	
BREAKFAST	Hotel	Hotel	Hotel	
LUNCH	Venue of the Meeting	Venue of the Meeting	X	
DINNER	Hotel	Hotel	X	

## 8. TRANSPORTATION DURING THE MEETING

During the days of the meeting, we will be supplying a transfer service from the hotel to the venue of the meeting and back to the hotel at the end of the day. Please consult the schedule below to confirm what time you shall be at the lobby of the hotel.

OCTOBER 1	OCTOBER 2	OCTOBER 3	OCTOBER 4	OCTOBER 5
06:50	08:15	08:15	08:15	07:15

## 9. ABOUT BELO HORIZONTE

Belo Horizonte ("Beautiful Horizon") is the sixth-largest city in Brazil and the eighteenth-largest in the Americas. The metropolis is anchor to the Belo Horizonte metropolitan area, ranked as the third most populous metropolitan area in Brazil. Belo Horizonte is the capital of the state of Minas Gerais, Brazil's second most populous state. It is the first planned modern city in Brazil. The city is built on several hills and is completely surrounded by mountains.

The region was first settled in the early 18th century, but the city as it is known today was planned and constructed in the 1890s, to replace Ouro Preto as the capital of Minas Gerais. The city features a mixture of contemporary and classical buildings, and is home to several modern Brazilian architectural icons, most notably the Pampulha Complex. In planning the city, Aarão Reis and Francisco Bicalho sought inspiration in the urban planning of Washington, D.C.

## 10. LANGUAGE

Presentations and work group interactions during the "Sustainable Water Management in Mining and Post-Mining Landscapes" Workshop will be in English. Simultaneous translation **will not** be available.

## 11. CLIMATE

The climate in Belo Horizonte is warm and temperate. The average temperature in October lies at 21,9°C, with minimum temperatures of 16,3°C and a maximum of 27,5°C. The average precipitation for October is 120 mm. In this context, bringing weatherproof clothing or an umbrella are advisable.

	SEPTEMBER 30	OCTOBER 1	OCTOBER 2	OCTOBER 3	OCTOBER 4	OCTOBER 5	OCTOBER 6
MAX	28° C	28° C	27° C	29° C	30° C	30° C	29° C
MIN	18° C	18° C	16° C	16° C	17° C	17° C	16° C

## 12. CURRENCY

The unit of money in Brazil is the Real (BRL). The national currency consists of bills ranging from R\$2, R\$5, R\$10, R\$20, R\$50 and R\$100. Coins are also available in varied colors and sizes, with value ranging from 1 cent, 5 cents, 10 cents, 25 cents, 50 cents and also 1 Real. Images of Brazilian animals illustrate

one side of the bills, being the other side illustrated by a female character, which represents the Republic.

All international credit cards will be accepted. If you want to exchange money, we recommend you do it at the airport (Banco Safra).

Currency rate for September 26: 1 EUR = 4.74 BRL

### 13. TIME ZONE

The official time in Belo Horizonte is UTC/GMT -3 hours.

### 14. ELECTRICITY

The electrical voltage in Belo Horizonte is of 110 V. In Brazil, the power sockets are of type N. It is recommended to bring a power converter and a plug adapter for your electronic devices. Check the label on your appliances. Some appliances never need a converter. If the label states 'INPUT: 100-240V, 50/60 Hz' the appliance can be used in all countries in the world.

### 15. CONNECTIVITY

WI-FI access is available in the hotel lobby and rooms. WI-FI will also be available at the Federal University of Minas Gerais and at the Inhotim Institute.

### 16. ADDITIONAL DETAILS

- **Meeting clothes:** (business) casual.
- Pharmacy: in case you have any health problems, there are a number of pharmacies (farmácia/drogaria in Portuguese) near the hotel and the conference venue.
- If you have any kind of health problem or demand, please let us know so that we can provide all the necessary adaptations.
- **Contact person:** Vitor Vieira (Project Officer, Brazilian Academy of Sciences) - Phone: +55 (21) 98460-8892, [vvieira@abc.org.br](mailto:vvieira@abc.org.br).

Hoping to offer you a pleasant stay in Belo Horizonte, we will be waiting for you!

Support



Institutional Members of BAS

